

2022 IMPACT REPORT

# GROWING SOLUTIONS *from the grassroots*



**wea**  
WOMEN'S EARTH ALLIANCE





## CO-DIRECTORS MESSAGE

Dear Friends + Colleagues,

Six months ago, as we reflected on the first half of 2022, we shared how author Kathleen Norris once wrote that the root of the Greek word for crisis (κρίσις) was *to sift*—and that to be in crisis was an opportunity then to sift until only what's most vital remains.

This year has been a year of sifting through crises for communities around the world—a war that many have called a “fossil fuel war”; the loss of bodily sovereignty for many women across the U.S.; dangerous record-breaking heat waves; devastating droughts and flooding around the world; and more. Yet, as we look back on this year and the work of WEA Leaders around the world who are building resilience in the face of these crises, one thing is clear: We—you, us, everyone *together*—were made to meet these moments.

Thanks to your championship this year, climate initiatives led by grassroots leaders throughout our global alliance rose to meet every challenge and uncertainty, protecting our earth and building healthy, safe and just communities today and into the future. Together, we are in East Java, Indonesia, Kakamega, Kenya, Los Angeles, CA and beyond. We are ensuring food and health access to those hit hardest by the pandemic and the climate emergency. We are remediating the soil and decolonizing our food systems. We are protecting thousands of acres of forests and sequestering millions of pounds of carbon.

We hope you'll read on to experience the joy and transformation you have helped make possible. An investment in WEA is not just an investment in one initiative, but in thousands of coordinated women-led efforts mobilizing to sift through the crises—to shake out the devastation, the injustice, the harm—until only those things that are most important to a thriving future remain: Care. Reciprocity. Stewardship. Justice. *Life*. WEA resources these grassroots, women-led networks, so they have the tools, best practices, mentorship, financial support, and alliances they need to create transformational impact.

In 2023, with you by our side, we can say with full confidence that we were made for this moment. And we are ready to rise.

In partnership,

Amira Diamond, Melinda Kramer and Kahea Pacheco  
WEA Co-Directors

P.S. We'd love for you to watch [this special video message](#) from the WEA Team, so you can experience the tremendous impact you made possible. And check out our new [short animation](#)!

GLOBAL TEAM MESSAGE



2022 Global Team Message



Copy link



Watch on  YouTube

## OUR MISSION

Women's Earth Alliance empowers women's leadership to protect our environment, end the climate crisis, and ensure a just, thriving world.





WHAT WEA DOES





## OUR MODEL





## OUR PROGRAMMATIC PILLARS



CAPACITY-BUILDING  
TRAINING + FUNDING



RESEARCH +  
ADVOCACY



ALLIANCE-BUILDING



STORYTELLING +  
EDUCATION







**2022**  
**AT-A-GLANCE**

**12,074**

**WOMEN LEADERS  
TRAINED**

---

**18**

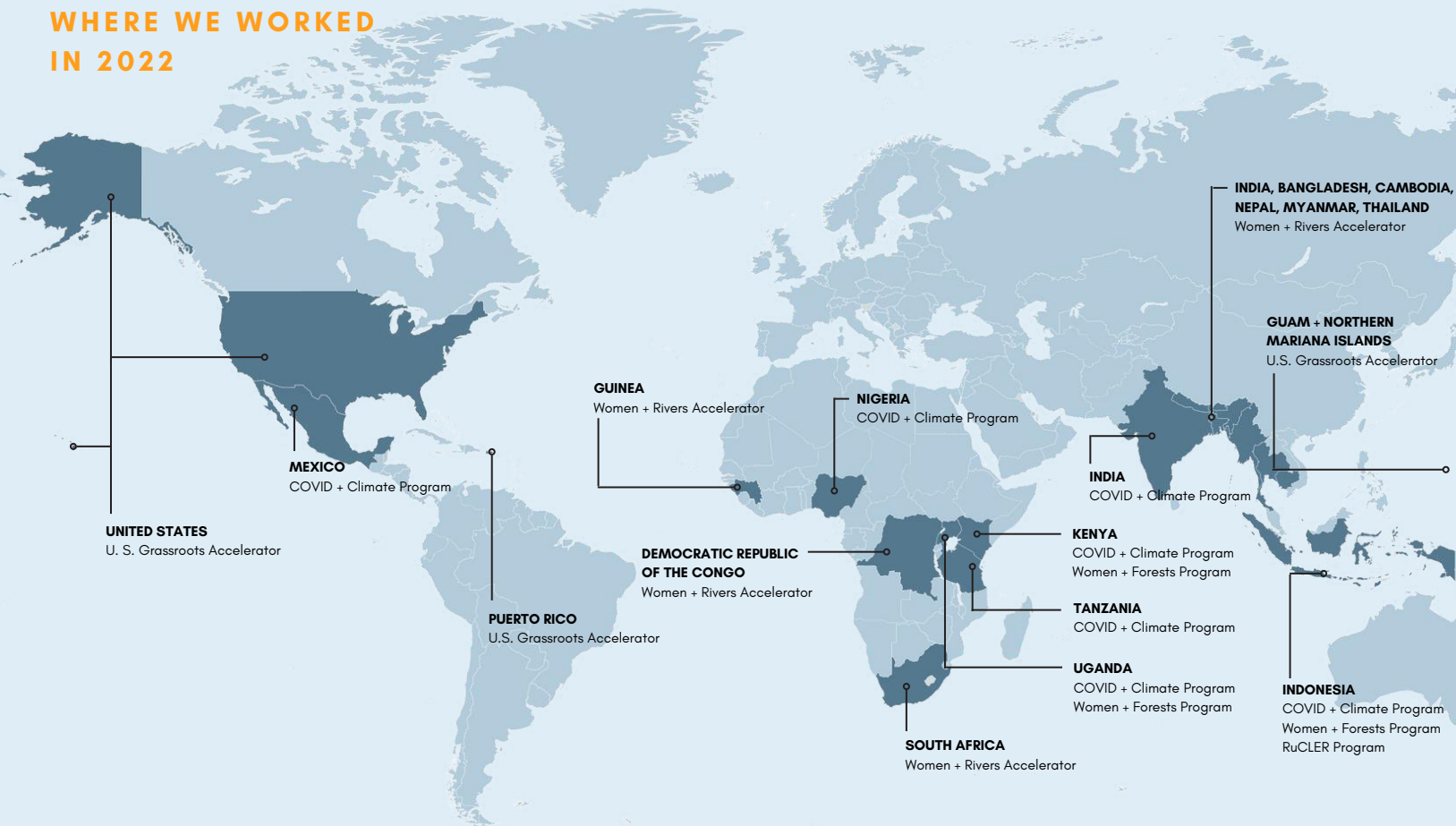
**COUNTRIES SERVED**

---

**4+ million**

**PEOPLE NOW HAVE ACCESS TO CLEAN  
WATER, HEALTH + WELLNESS SERVICES,  
FOOD SECURITY, PROTECTED LANDS +  
FORESTS, AND MORE.**

## WHERE WE WORKED IN 2022



# CAPACITY-BUILDING TRAINING + FUNDING

WEA resources women on the frontlines of the climate crisis with technical, advocacy and business training, funding, mentorship, and an alliance of peers working toward systems change.

When crises hit, women's networks are key to providing both relief and resilience for the future. Yet these grassroots networks are historically difficult for funders to identify and fund efficiently. Therefore, they remain siloed from each other and cut off from the resources they need to scale. Through WEA's robust network infrastructure, grassroots groups receive holistic training and funding quickly and effectively.





## COVID + CLIMATE RELIEF AND RESILIENCE PROGRAM

Our COVID + Climate Relief and Resilience Program ensures long-term food, water, and health solutions through training and resourcing networks of women-led organizations.

In 2022, WEA provided emergency relief and long-term resilience training for grassroots women leaders from communities severely impacted by the compounding effects of the pandemic and climate crises. Women leaders and their communities in India, Indonesia, Kenya, Mexico, Nigeria, Tanzania, and Uganda accessed sustainable sources of healthy food and safe water, sanitation, and hygiene; built their capacity to launch and operate green microenterprises; and accessed critical community infrastructure, like food clinics, shelters food distribution centers, water stations and more.





## LOCATION

India, Indonesia, Kenya, Mexico  
Nigeria, Tanzania, and Uganda

## KEY SOLUTIONS

Generate women's livelihood opportunities  
through green micro-enterprise  
development

Protect women's health + safety by  
increasing community access to  
vaccinations, health and wellness services,  
and food security

Ensure long-term food security through food  
gardens, tree nurseries, and agroforestry

## OUR IMPACT



**11,333** women  
RECEIVED TRAINING

AND WEA MOBILIZED  
**\$397,200**  
in seed grants  
TO SUPPORT PARTICIPANTS  
TO SCALE THEIR INITIATIVES

TOGETHER, WE ENSURED  
**20,221** people  
HAD ACCESS TO VACCINES, HEALTH  
AND WELLNESS SERVICES, AND  
FOOD SECURITY

WHICH POSITIVELY IMPACTS  
**1.3+** million people  
IN THESE REGIONS

**728,256**  
were women and girls.

## TRAINING PARTICIPANTS



planted  
**55,885** trees

established  
**4,846**  
food gardens



launched  
**1,155**  
climate-smart  
eco-enterprises

## WE ARE MADE FOR THIS PROGRAM SPOTLIGHT

As part of the 2022 COVID + Climate Relief and Resilience Program, WEA Indonesia launched a regenerative forest project, *Hutan Komunal* (Communal Forest) in collaboration with WEA Indonesia Accelerator Alumni Aniek Puspawardani and Nedhy Priscila Neonbeni.

Each leader has secured land for conservation and demonstration plots. Under Aniek's and Nedhy's leadership, these communal forests are being grown and managed collectively by local communities, and will serve the dual purpose of protecting existing land from destruction and securing communities' access to sustainably managed forest resources.

This initiative is designed to build the long-term resilience of the villages and ecosystems.







## WOMEN + FORESTS PROGRAM

In some of the most critical carbon sinks and threatened forest ecosystems on Earth, WEA builds the capacity of grassroots women who are leading vital forest restoration, protection, and sustainable management initiatives. We partner with women leaders to engage their communities in forest ecosystem restoration and establish forest-friendly livelihoods.

This year, WEA Leaders launched Indigenous tree nurseries, established tree planting and maintenance initiatives, and promoted agroforestry with Indigenous trees and climate-resilient crops.

WEA Leaders also protected and managed forests by sustainably harvesting forest stands for firewood, hosting community trainings to ensure the transition to forest-friendly economies, and conducting widespread outreach and education on forest protection.





## LOCATION

Indonesia, Kenya, and Uganda

## KEY SOLUTIONS

Protect the critical forest ecosystems of Northern Uganda, Kenya's last tropical rainforest, and Indonesia's mangroves.

Enable alternate, forest-friendly income generation and food security for forest-dependent communities.

Fund and support forest patrolling, native tree nursery expansion and forest monitoring.

Support women-led groups to secure land for forest restoration and stewardship

## OUR IMPACT



**690** women  
RECEIVED TRAINING

AND WEA MOBILIZED  
**\$143,200**

in seed grants

TO SUPPORT PARTICIPANTS  
TO SCALE THEIR INITIATIVES

## TRAINING PARTICIPANTS



grew  
**49,301** trees

launched  
**28** native tree  
nurseries



AND POSITIVELY IMPACTED

**338,163** people  
IN THESE REGIONS

## AND TOGETHER, WE:

restored **66**   
hectares  
OF ECOSYSTEMS &  
FOOD FORESTS

protected **15**   
hectares  
OF MANGROVE  
HABITAT

WHICH WILL sequester

**165,000** tons



OF ATMOSPHERIC  
CARBON IN THEIR LIFETIME

## WE ARE MADE FOR THIS

### LEADER SPOTLIGHT

When COVID-19 hit Kakamega, Kenya, most people Fatuma Erima knew lost their jobs, children missed school, and many families struggled. So Fatuma was eager to join a WEA training and learn how to leverage her skills to help her community.

Through WEA's hands-on skill building, networking, mentorship and funding, Fatuma launched a tree nursery and tree planting initiative and trained other women to do the same. She has now trained 520+ people to grow and sell tree saplings, grow trees, and make and sell clean cookstoves and briquettes.

Since launching her eco-enterprise, Fatuma has seen significant change in her community—reduced deforestation, increased household financial wellbeing, less gender-based violence, more women's leadership, and improved family health and wellbeing. Personally, Fatuma now receives support and respect in her family and community and has even bigger dreams for the future.





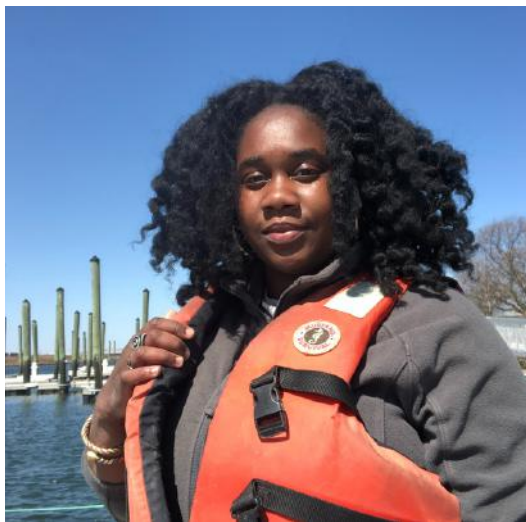




## U.S. GRASSROOTS ACCELERATOR PROGRAM

Informed by a strong network of partner organizations from throughout the country, the U.S. Grassroots Accelerator for Women Environmental Leaders generates measurable and sustained improvements to our environment, economies, and communities by catalyzing and connecting women-led, grassroots solutions.

From reforesting land in Cabo Rojo, Puerto Rico; to teaching indigenous youth how to steward their oceans in Guam and the Mariana Islands; to protecting sacred sites in the Iss'Awe Territories of the Pit River Nation in California; to protecting bayous and wetlands in Texas—the leaders in our 2022 cohort are drawing from their lived experiences and devoted activism to create intersectional, long-lasting and just solutions for our communities.





## LOCATION

24 U.S. States, Puerto Rico, Guam, and the Northern Mariana Islands

## KEY SOLUTIONS

Protect Indigenous sacred sites and advocate for tribal rights to safe water, air, and land.

Challenge toxic chemical pollution and extractive industries.

Decolonize food systems and preserve Indigenous seeds.

Build movement infrastructure within diverse women-led climate justice efforts so intersectional solutions can scale, replicate and reach a national platform.

## OUR IMPACT



**28** women  
ACCELERATED THEIR  
ENVIRONMENTAL &  
CLIMATE SOLUTIONS

WHICH POSITIVELY IMPACTS

**1.2+** million people  
ACROSS THE U.S., U.S.  
TERRITORIES AND PACIFIC

WRAPAROUND SUPPORT FOR LEADERS INCLUDED:



**65** hrs  
of 1-on-1  
mentorship

**\$195,000**  
in Accelerator grants

TO SUPPORT PARTICIPANTS  
TO SCALE THEIR INITIATIVES



**WE ARE MADE FOR THIS**  
**IN HER OWN WORDS**

"We are not protecting  
nature. We *are* nature. We  
are nature protecting itself  
as human beings."

**CASEY CAMP-HORINEK (PONCA NATION)**  
**2022 U.S. GRASSROOTS ACCELERATOR LEADER**





## **WOMEN + RIVERS ACCELERATOR PROGRAM**



The Women + Rivers Accelerator, a partnership with International Rivers, strengthens the critical efforts of women river defenders who are protecting free-flowing rivers and the lands, forests and territories they sustain.

This program recognizes the fundamental role women play in protecting and stewarding freshwater resources and spurs collective action to challenge the deep-rooted, gender inequities that women face.

With 10 nations represented from the Congo to Nepal, 50 rivers are currently under protection with the help of 23 women environmental leaders who completed our training intensive.





## LOCATION

Bangladesh, Cambodia, Democratic Republic of the Congo, Guinea, India, Kenya, Myanmar, Nepal, South Africa, and Thailand

## KEY SOLUTIONS

Bolster women's environmental leadership and engagement nationally and internationally by strengthening access to networks, spheres of influence, information, and resources.

Grow public awareness and attention around key water and river protection campaigns.

Utilize International Rivers' Transforming Power gender guide to strengthen gender-responsive campaigning.

## OUR IMPACT



**23** women  
ACCELERATED THEIR  
WATER & RIVER  
PROTECTION CAMPAIGNS

AND WEA MOBILIZED  
**\$115,000**  
in seed grants  
TO SUPPORT THEIR  
CRITICAL WORK

PROTECTING  
**50** rivers  
worldwide

WHICH POSITIVELY IMPACTS  
**1** million people  
ACROSS 10 NATIONS WHO  
RELY ON HEALTHY RIVERS



**WE ARE MADE FOR THIS**  
**IN HER OWN WORDS**

"Our work is an uphill battle every day and every hour. To see that all of us have similar journeys makes me feel stronger, inspires me to do more, and that is the strength that I am drawing from these collaborations."

**NIRMILA GOWDA (INDIA)**  
**2022 WOMEN + RIVERS ACCELERATOR LEADER**









## RURAL CLIMATE + ECONOMIC RESILIENCE ACCELERATOR PROGRAM (RUCLER)

In Indonesia, WEA and Pratisara Bumi Foundation are generating economic prosperity, climate protection, economies that incentivize forest protection, and healthy, safe, and equitable communities. The RuCLER Accelerator Program responds to the devastating economic impacts women leaders and their communities continue to face in the wake of COVID-19.

This 2-year program works in 11 rural areas in Indonesia to revive and accelerate eco-enterprises, introduce nature-based solutions, stimulate the local economy, and empower the work of women entrepreneurs. Through uplifting community-centered business models, this program forwards collaboration and intergenerational knowledge exchange.



## LOCATION

5 provinces across Indonesia — Bali, East Nusa Tenggara, Lampung, North Sumatra, and South Kalimantan

## KEY SOLUTIONS

Strengthen women-led eco-enterprises by providing practical training in business operations such as finance, product improvement, and marketing.

Revive rural areas by accelerating the growth of green and sustainable business.

Build climate resilience by uplifting traditional ecological knowledge and strengthening cooperative business models.

## OUR IMPACT



**12** women-led  
eco-enterprises  
ARE STRENGTHENING  
THEIR BUSINESSES

BUILDING THE CAPACITY OF  
**46** team  
members

AND SUPPORTING  
**531** local  
artisans  
TO IMPROVE PRODUCTION  
STANDARDS AND ACCESS  
BETTER MARKETS



## WE ARE MADE FOR THIS ENTREPRENEURSHIP SPOTLIGHT

As part of the 2022 G20 Summit in Bali, Indonesia, Women's Earth Alliance collaborated with Pratisara Bumi Foundation and Earthly Economic Coalition (Koalisi Ekonomi Membumi) to showcase two of the community-led enterprises—Balini Organic and Samaren—participating in WEA and Pratisara Bumi Foundation's RuCLER program.

Throughout the Summit, Balini Organic—a social enterprise led by WEA Leader Auditya "Tya" Sari—and Samaren, led by WEA Leader Raihal Fajri, showcased their locally made, sustainable products and shared how women-led enterprises serve as an example of growing a resilient economy from the ground up.







# RESEARCH + ADVOCACY

Bringing forth 17 years of working at the intersection of gender, environmental/climate, economic and social justice, WEA engages in strategic research and advocacy opportunities to shed light on critical and emerging issues within the gender and climate movements.

While our research and advocacy campaigns build our collective knowledge base and the power of grassroots women's environmental solutions, our reports and toolkits create access to the strategies, tools and policies that people can use to protect their water, food, land, and traditions.

This year, WEA was honored to amplify women's environmental leadership on the world stage.



# CENTERING WOMEN'S ENVIRONMENTAL LEADERSHIP ON THE WORLD STAGE



## UN WOMEN CSW66 PARALLEL EVENT

WEA and Vital Voices Global Partnerships launched our Climate and Gender Action Toolkit at UN Women's CSW66. Alongside partners from Daughters for Earth and EmpoderaClima, we dove into the urgent need to sustain intersectional, intergenerational, feminist movements for climate justice, and shared our resource to support people in designing their personal commitments for climate action. [WATCH HERE.](#)



## WEF PANEL ON SCALING UP FOREST PROTECTION

WEA joins the World Economic Forum's IT.org for a dialogue on efforts to reach COP26's goal to end deforestation by 2030. WEA's Women + Forests Program serves as a model for centering the leadership, expertise and needs of Indigenous communities—particularly Indigenous women—who have successfully and sustainably stewarded our world's forests for generations. [WATCH HERE.](#)



## BIONEERS

WEA joins Daughters for Earth, Polluter's Out, and Bioneers for a powerful discussion on the impact and importance of women's involvement in the climate crisis. WEA Co-Director Kahlea Pacheco shared her experiences working alongside global women leaders, the struggles women leaders face within transformative movements, and the need to search for new models of equitable, feminist and just leadership. [WATCH HERE.](#)





## WEF'S ANNUAL MEETING IN DAVOS

In May, WEA Co-Director Kahea Pacheco attended the World Economic Forum's Annual Meeting in Davos, Switzerland. There, she underscored the importance of the WEA model—partnering with women leaders at the helm of proven grassroots climate solutions. She spoke on [how corporations can engage in solutions for the earth; creating impact through the power of people;](#) and [addressing eco-anxiety and climate doomism.](#)



## "WOMEN DECLARE EMERGENCY AND RAISE CLIMATE AMBITION" AHEAD OF COP27

WEA joined a special, women-led dialogue on Ocean Loss & Damage as part of the "Women Declare a Climate Emergency" Summit in November 2022. This panel was hosted in partnership with She Changes Climate, Oceanic Global, Biorock Indonesia and the Tonga Voyaging Society to raise climate ambition and gender equity issues in the Pacific ahead of COP27. [WATCH HERE.](#)



## COP27

WEA East Africa Regional Director Rose Wamalwa and WEA Leader Comfort Hajra Mukasa attended COP27 in Egypt to advocate for grassroots women's leadership in this high profile climate conference. They participated in the African Women's Forum, liaised with Cabinet Minister for Environment in Kenya, and attended key sessions including a panel by The Nature Conservancy where they discussed the importance of water funds for grassroots communities.



### **FARWIZA FARHAN NAMED TO TIME100 NEXT LIST**

WEA Indonesia Program Lead Facilitator and WEA Leadership Board Member Farwiza Farhan was recognized on the 2022 TIME100 Next list. Farwiza and her team at HakA are doing the critical work of protecting the Leuser Ecosystem—one of the great lungs of the world and the last place on Earth where iconic species such as tigers, orangutans, elephants, and rhinoceros still coexist in the wild.



### **OLANIKE OLUGBOJI CHOSEN AS AMBASSADOR FOR THE WORLD TRADE CONGRESS ON GENDER**

Longtime WEA Nigeria Program Lead, Olanike Olugboji, and Founder of WISE Nigeria was one of five global gender equality advocates appointed as an ambassador of the first-ever World Trade Congress on Gender, taking place in December 2022. Olanike shared grassroots perspectives on women's economic empowerment with researchers, experts and WTO members, and provided recommendations on how to drive work on trade and gender forward.

# ALLIANCE- BUILDING

WEA was founded in 2006 by a circle of 30 grassroots women leaders from 26 countries who came together to create a framework for transforming the world. These leaders identified that, for too long, grassroots women have worked in isolation, cut off from one another and the support systems necessary to build a sustainable and just movement.

Since that first meeting, building a power base of connection and action has been a core commitment of our work.

Our Alliance-Building work brings WEA Leaders and our communities together virtually and in person for topical learning, relationship-building and mutual aid.



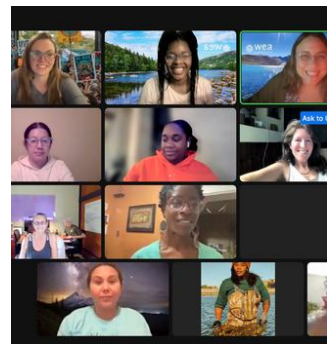


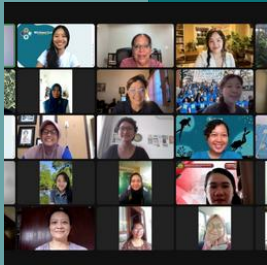
## GATHERING IN-PERSON AND OVER DISTANCES IN 2022

One of our touchstones here at WEA is the phrase, "Each time we gather, the world changes."

The pandemic made that difficult. And while our Alliance found ways to make the most of virtual gatherings in 2020/2021, we were thrilled to be able to reunite in person in 2022.

Yet those years of Zoom calls taught us something: even seasons of staying home can become opportunities for expansion. We saw our community grow exponentially in the last 2 years, and so while we started stepping out into the world again this year, we're also continuing the drumbeat of virtual events that bridge learning and connection across the globe.





## GLOBAL ALUMNI CIRCLE

The WEA Global Alumni Circle is our series of virtual gatherings that equip WEA alumni from over 16 years of our global programming with ongoing skill-building, deep relationship-building, access to funding and visibility opportunities, and more.

In 2022, WEA hosted 6 bi-monthly sessions on topics ranging from movement-building, to grassroots fundraising, impact presentation and communication, and reforestation.



## AFFILIATIONS

It.org / World Economic Forum

Bay Area Climate Health Professionals

Daughters for Earth

Feminist Green New Deal

Global Alliance for Climate Smart Agriculture

Incubation Network

IxSA

One Earth Marketplace

Oxfam Sisters on the Planet

SHE Changes Climate



## TEPI TALKS

A 12-part virtual series that brings together WEA Leaders from across Indonesia who share unique experiences, systemic challenges and opportunities. During these workshops, leaders share and gain new technical skills, create a stronger network with other grassroots women leaders within their region, deepen their capacity, and grow their impact.

# STORYTELLING + EDUCATION

Solving the climate crisis is going to take all of us. It will require us to recognize our collective responsibility, roll up our sleeves and be *moved to action*—for ourselves, one another and the Earth.

And that starts with a story. WEA illuminates the work of grassroots women leaders who are stepping boldly forward to protect our communities and the Earth. Through storytelling, we inspire a growing audience to take action in their own communities through local events, educational programs, online channels, and exchange trips. Then we equip them with the blueprints to do so through our World WEAver Program—an online and in-person series of public learning and knowledge-sharing opportunities where WEA Leaders showcase practical solutions that everyone can enact in their own homes and communities, raise awareness about key issues, and direct a broad audience towards ways they can take action locally and globally.





## WORLD WEAVER PROGRAM: 2022 SEASON

### PowHer Up: Women-led Clean Energy Solutions to Power our World

Tuesday, April 19, 2022  
11:00AM PT / 2:00PM ET



#### POWHER UP: WOMEN-LED CLEAN ENERGY SOLUTIONS TO POWER OUR WORLD

WEA Leader Brady Seals of the Rocky Mountain Institute (RMI) in Colorado and WEA Nigeria Program Lead Olanike Olugboji of WISE in Kaduna, Nigeria lead a discussion on the impacts of air pollution in our homes and communities, and the innovative solutions arising from the grassroots (one that could involve transitioning away from using a gas stove in your home!). [WATCH HERE.](#)

### Healing Waste-Filled Lands With Grassroots Solutions

Thursday, July 21, 2022 - 2:00PM PT / 5:00 PM ET  
Friday, July 22, 2022 - 4:00 AM WIB / 7:00 AM CHST



#### HEALING WASTE-FILLED LANDS WITH GRASSROOTS SOLUTIONS

An inspiring DIY workshop where WEA Leaders Michelle Vaocolo of the Micronesia Climate Alliance and Webri Veliana—an award-winning advocate from Indonesia's Green Wave organization—share innovative strategies for reducing our plastic and waste, and building a sustainable circular economy. [WATCH HERE.](#)

### ACCELERATING WOMEN-LED ENVIRONMENTAL + CLIMATE SOLUTIONS

WEDNESDAY  
NOV. 30TH, 2022  
3 - 4:30PM PT

CONNECT + SUPPORT ACTIONS FROM ACROSS THE U.S. TO PROTECT OUR COMMUNITIES + THE EARTH



#### U.S. GRASSROOTS ACCELERATOR COMMUNITY EVENT

A special gathering where community members can hear directly from the 28 inspiring grassroots women leaders from WEA's 2022 U.S. Grassroots Accelerator, who share their environmental project that they are accelerating through this program. This is an opportunity to learn about women-led climate and environmental justice efforts nationwide, and discover ways to support. [WATCH HERE.](#)



In this inspiring week-long lineup of events, 8 leaders from WEA share their wisdom, passion and critical grassroots solutions. The series focuses on our CARE Framework—caring for ourselves so that we can care for the earth.

“When I first started turning [my attention] towards my own wellness...I called back my Indigenous values and principles to remind myself that our movements don’t need martyrs—we need sustainability.” — WEA Leader Ruth Łchavaya K’isen Miller

## WATCH RIPPLE WEEK



# The Climate and Gender Action Toolkit

Leadership for a Thriving  
and Equitable Future

A Guide for Orienting Towards  
Climate and Gender Justice

POWERED BY WOMEN'S EARTH ALLIANCE & VITAL VOICES

## CLIMATE & GENDER ACTION TOOLKIT WITH VITAL VOICES

Through this powerful toolkit, launched at the 2022 UN Women's CSW66, Women's Earth Alliance and Vital Voices Global Partnership guide and inspire leaders—in any and every sector—to join this critical movement by centering their own leadership practices in climate and gender action. Orienting ourselves and our organizations toward climate and gender action is the key to our success and what the urgency of this moment calls for.



## CORPORATE VOLUNTEERISM WITH VERIZON

WEA is a Verizon Social Innovation Partner, supporting Verizon to reach their goal of inspiring thousands of employees to volunteer and address climate change. Going on our 5th year, WEA has designed dozens of events in partnership with Verizon to engage employees on critical issues from Indigenous seed saving, biodynamic farming, and volunteers sharing their expertise with women environmental entrepreneurs. In 2022, 487 Verizon employees volunteered with WEA, accumulating over 1,624 volunteer hours.



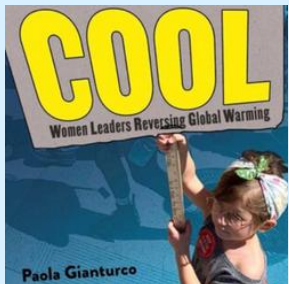
## NOTEWORTHY MEDIA + PUBLICATIONS

*Atlantic Re:think*

# The Future of Forestry is Female

To combat climate change, women around the world are leading efforts to reverse deforestation and manage forests sustainability.

Photographs by Mike Belleme



- The [Atlantic Re:Think](#) features WEA and WWANC's [Women + Forests Program](#), Senior Program Director Arielle Moinester, and WEA Leader Fatuma Erima's powerful work to restore and protect the last tropical rainforest in Kenya.
- WEA Co-Director Kahea Pacheco speaks to the World Economic Forum about:
  - [4 climate topics we should be talking about](#)
  - [What's needed for climate action ahead of COP27](#)
  - [Insights on how women can thrive despite the gender gap](#)
- WEA identifies ["5 principles for partnering with communities on forest restoration"](#) with the World Economic Forum.
- WEA Co-Founder/Co-Director Melinda Kramer featured in ["COOL: Women Leaders Reversing Global Warming"](#) by award-winning photographer, author, and longtime WEA champion Paola Gianturco and her then-12-year-old granddaughter Avery Sangster.
- WEA featured in NYT Bestseller, ["Regeneration: Ending the Climate Crisis in One Generation"](#) by Leadership Board Member Paul Hawken.
- Atmos digs into [how Nalleli Cobo-Uriarte's \(WEA U.S. Accelerator\) leadership is bringing about a cleaner, safer future for L.A. youth.](#)
- Crystal Cavalier-Keck (Occaneechi Band of the Saponi Nation) (WEA U.S. Accelerator) and other frontline activists [set a landmark environmental precedent in Virginia](#), recognizing the disproportionate impact of pollution on Black, Indigenous, and low-income communities.

[READ MORE NEWS IN OUR PRESS CENTER.](#)

# SOCIAL MEDIA + OUTREACH IN 2022

## INSTAGRAM



WEA's followers **increased by 139%** in 2022—going **from 12,123 to 29,013 followers.**

Our content was **viewed more than 3,652,200** times in the last year.

We reached **1,132,580 people** over Instagram this year—that's **an increase of 155.6%!**



**WE REACHED 1.1M PEOPLE OVER FACEBOOK (A 142.4% INCREASE)**



**OUR MAILING LIST GREW BY 23.13%!**



**45K PEOPLE VISITED OUR WEBSITE (ABOUT 118 PEOPLE PER DAY)**

# THE WEA TEAM

WEA has a distributed network model whereby regional programs are guided by longtime WEA Alliance Leaders who draw from their lived experiences and dedicated activism to shape WEA's regional priorities. Where possible, WEA Alliance Leaders collaborate across regions to create long-lasting impact, bridge strategies, and reciprocate learning and support.

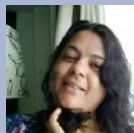
WEA's leadership model is largely decentralized with a small U.S.-based team that coordinates communications, operations, fundraising, and programmatic direction. Since its founding, WEA has practiced and iterated a shared leadership structure, whereby authority, responsibility, and accountability are distributed across our organization, unleashing unique creativity and diversity of approaches.

We give thanks to all the members of our team—both current and past—whose vision, tenacity, and brilliance are part of our very DNA.





## MEET THE TEAM



**BONDITA ACHARYA**  
North India Program  
Lead



**MARIA AGUSTIN**  
Indonesia Partnership  
Liason



**ANNESHA CHOWDHURY**  
Global Program  
Manager



**AMIRA DIAMOND**  
Co-Founder, Co-Director



**MELINDA KRAMER**  
Co-Founder, Co-Director



**KIYA LEAKE**  
North America & Pacific  
Program Manager



**MEGHAN MATHEW**  
Operations Manager



**ARIELLE MOINESTER**  
Senior Program Director



**OLANIKE OLUGBOJI**  
Nigeria Program Lead



**KAHEA PACHECO**  
Co-Director



**JEN PALMER**  
Executive Assistant



**DANIELA PEREZ**  
North America & Pacific  
Program Director



**SANIY AMALIA  
PRISCILA**  
Indonesia Program  
Manager



**IRMA SITOMPUL**  
Southeast Asia  
Regional Director



**ROSE WAMALWA**  
East Africa  
Regional Director



WE WORKED FROM 61  
DIFFERENT PLACES IN 2022



... SENT 51,848 SLACK  
MESSAGES TO ONE  
ANOTHER



AND HELD 46 VIRTUAL  
WELLNESS TEAM CHECK-  
INS TO STAY CONNECTED

# OUR PARTNERS

WEA's model is deeply rooted in partnership. In 2022, we were honored to implement innovative and impactful programs alongside these organizations:

## 2022 PROGRAM PARTNERS



INDONESIA



Purva Bharati Educational Trust  
To Seek to Strive and not to Yield

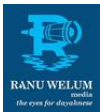
INDIA



NIGERIA



EAST AFRICA



## 2022 FUNDING PARTNERS





The impact shared in this report was only possible  
because of our vibrant community of champions  
whose drumbeat of support allows us to be  
responsive, visionary and bold.

Thanks to each and every one of you who contributed  
to WEA's growth in 2022.

*Together, #WeAreMadeForThis.*

Learn more about our work and how to join us in 2023:

[WOMENSEARTHALLIANCE.ORG](https://WOMENSEARTHALLIANCE.ORG) | [INFO@WOMENSEARTHALLIANCE.ORG](mailto:INFO@WOMENSEARTHALLIANCE.ORG)

## PHOTO CREDITS

### COVER

WEA Leaders in the COVID + Climate Program.  
Credit: Anthony Wanjiku

### SLIDE 3

(Top) Amira Diamond. Credit: WEA Indonesia /  
(Middle) Melinda Kramer. Credit: Ayla Isadora /  
(Bottom) Kahea Pacheco. Credit: Kahea Pacheco

### SLIDE 7

(Top) Seeds of Resilience, India Program Master Home Gardener and Seed Saver Suvanna Hegde.  
Credit: Vanastree / (Middle) Women and Water Protector. Credit: International Rivers / (Bottom) U.S. Accelerator Leader Grace Tuttle at MVP rally.  
Credit: Grace Tuttle

### SLIDE 8

WEA Leaders in the COVID + Climate Program.  
Credit: Anthony Wanjiku

### SLIDE 10

(Top left) WEA Leader in the COVID + Climate Program. Credit: Anthony Wanjiku / (Top right) Women and Water Protectors. Credit: International Rivers / (Bottom left) U.S. Accelerator Leader Beth Roach with Design Team Member Corrina Gould at the U.S. Accelerator Collaboratory. Credit: Paige Green / (Bottom right) WEA Leader Fatuma Erima in her stand of trees. Credit: Anthony Wanjiku / (Large) WEA Leader in the COVID + Climate Program. Credit: Anthony Wanjiku

### SLIDE 11

WEA Leaders in the COVID + Climate Program.  
Credit: Anthony Wanjiku

### SLIDE 12

(Top left) WEA Leader in Tanzania at COVID + Climate training. Credit: Rose Wamalwa / (Top right) WEA Leader in Kenya at COVID + Climate training. Credit: Rose Wamalwa / (Bottom left) WEA Nigeria Program Lead Olanike Olugboji with WEA Leader in COVID + Climate Program. Credit: Olanike Olugboji / (Bottom right) WEA East Africa Regional Director Rose Wamalwa demonstrating planting in Kenya. Credit: Rose Wamalwa

### SLIDE 14

(Left) Celebrating Indonesia's Tree Planting Day at the Communal Forests demonstration plot. Credit: WEA Indonesia / (Right) WEA Leader Aniek Puspawardani opens a Communal Forest training.  
Credit: WEA Indonesia

### SLIDE 15

WEA Leaders in the COVID + Climate Program.  
Credit: Anthony Wanjiku

### SLIDE 16

(Top right) WEA Leader planting mangroves as part of the Women + Forests Program. Credit: WEA Indonesia / (Top left) WEA Leaders in Kenya as part of the Women + Forests Program. Credit: Anthony Wanjiku / (Bottom) WEA Leaders in Kenya as part of the Women + Forests Program. Credit: Anthony Wanjiku

### SLIDE 18

(All) WEA Leader Fatuma Erima at her tree nursery.  
Credit: Anthony Wanjiku

### SLIDE 19

Participants walk to site to plant mangroves as part of WEA's Women + Forests Program. Credit: WEA Indonesia

### SLIDE 20

(Top) WEA U.S. Accelerator Leader Rocio Torres Moguel. Credit: Rocio Torres Moguel / (Bottom left) WEA U.S. Accelerator Leader Tanasia Swift. Credit: Tanasia Swift / (Bottom right) WEA U.S. Accelerator Leader Grace Tuttle. Credit: Grace Tuttle

### SLIDE 22

WEA U.S. Grassroots Accelerator Leader Casey Camp. Credit: Casey Camp

### SLIDE 23

WEA U.S. Grassroots Accelerator Leader Nikila Badua stands in front of her mural. Credit: Nikila Badua

### SLIDE 24 and 25

Women and Water Protectors. Credit: International Rivers

### SLIDE 26

Cauvery River, India. Credit: Ashwin Kumar

### SLIDE 27

Women and Water Protector. Credit: International Rivers

### SLIDE 28

WEA Leader Auditya Sari of Balini Organics networks at the G20 Summit as part of WEA's RuCLER Program. Credit: WEA Indonesia

### SLIDE 29 AND 30

Eco-enterprises from WEA's RuCLER Program showcased at the G20 Summit. Credit: WEA Indonesia

### SLIDE 31

WEA Leader in the COVID + Climate Program.  
Credit: Anthony Wanjiku

### SLIDE 32

WEA Leader in the Global Women's Water Initiative in Sub-Saharan Africa. Credit: Global Women's Water Initiative

### SLIDE 34

(Left) WEA Co-Director speaks at Davos. Credit: World Economic Forum / (Right) WEA East Africa Regional Director Rose Wamalwa at COP27.  
Credit: Rose Wamalwa

### SLIDE 35

(Right) WEA Nigeria Program Lead Olanike Olugboji. Credit: Olanike Olugboji

### SLIDE 36

WEA Indonesia Leaders hug at Indonesia Accelerator Collaboratory. Credit: WEA Indonesia.

### SLIDE 37

(Top) WEA Team and Alliance Leaders at Spring Reunion. Credit: Ayla Isadora / (Bottom left and right) Screenshots of virtual WEA gatherings. Credit: WEA / (Bottom middle) WEA Co-Directors speak at Spring Reunion. Credit: Ayla Isadora

### SLIDE 39

WEA Leader Linda Nursanti from the Indonesia Accelerator. Credit: WEA Indonesia

### SLIDE 42

WEA and Verizon volunteers at a volunteer day in Virginia. Credit: Beth Roach

### SLIDE 43

(Bottom left) WEA Leader Nalleli Cobo-Uriarte. Credit: Nalleli Cobo-Uriarte

### SLIDE 45

(Top left) WEA East Africa Regional Director Rose Wamalwa. Credit: Anthony Wanjiku / (Top middle) WEA Nigeria Program Lead Olanike Olugboji at the World Trade Congress on Gender. Credit: Olanike Olugboji / (Top right) WEA Co-Founder/Co-Director Amira Diamond with members of the WEA Indonesia team. Credit: Amira Diamond  
(Bottom) WEA Team and Alliance Leaders at Spring Reunion. Credit: Ayla Isadora

### SLIDE 46

Team photos for Amira Diamond, Melinda Kramer, Kiya Leake, Kahea Pacheco, and Jen Palmer taken by Ayla Isadora.

### BACK COVER

WEA Leaders in the COVID + Climate Program.  
Credit: Anthony Wanjiku

