



## 2023 PROGRAM OVERVIEW FOR APPLICANTS

*Regenerative Agriculture & Health*  
**ACCELERATOR**



# TABLE OF CONTENTS

## TOPICS FOR TODAY

Introduction to the Program  
Why Regenerative Agriculture & Health  
What The Program Includes  
What You Gain From The Program  
Important Dates & Program Curriculum  
Application and Nomination Process





# INTRODUCTION



Women are the nexus of agri-nutrition-health through their roles as farmers, herbalists, medicinal plant collectors, and native plant and seed custodians. Women play a critical role in ensuring autonomous health and food sovereignty while protecting ecological knowledge key to our survival and stewarding our natural resources.

The 2023 U.S. Regenerative Agriculture & Health Accelerator brings together women leaders working at the intersection of land, health, and gender equity. WEA equips these leaders with skills, resources, and a network infrastructure to transform and accelerate change in agriculture and health.

# THIS PROGRAM INCLUDES

4 months of facilitated virtual and potential in-person skill-building, knowledge exchange, and coaching

Weekly group video calls and webinars with expert speakers

Self Guided learning using our online platform, including videos and curated content from peers in your field

The Ripple Week to connect with WEA Wisdom Keepers in your field that can bring skill-based knowledge & expertise to your projects

Alumni Mentors and Affinity Groups designed to dig deeper into challenges and solutions

The virtual “Collaboratory”: A 2-day virtual learning and experiential knowledge-share in November



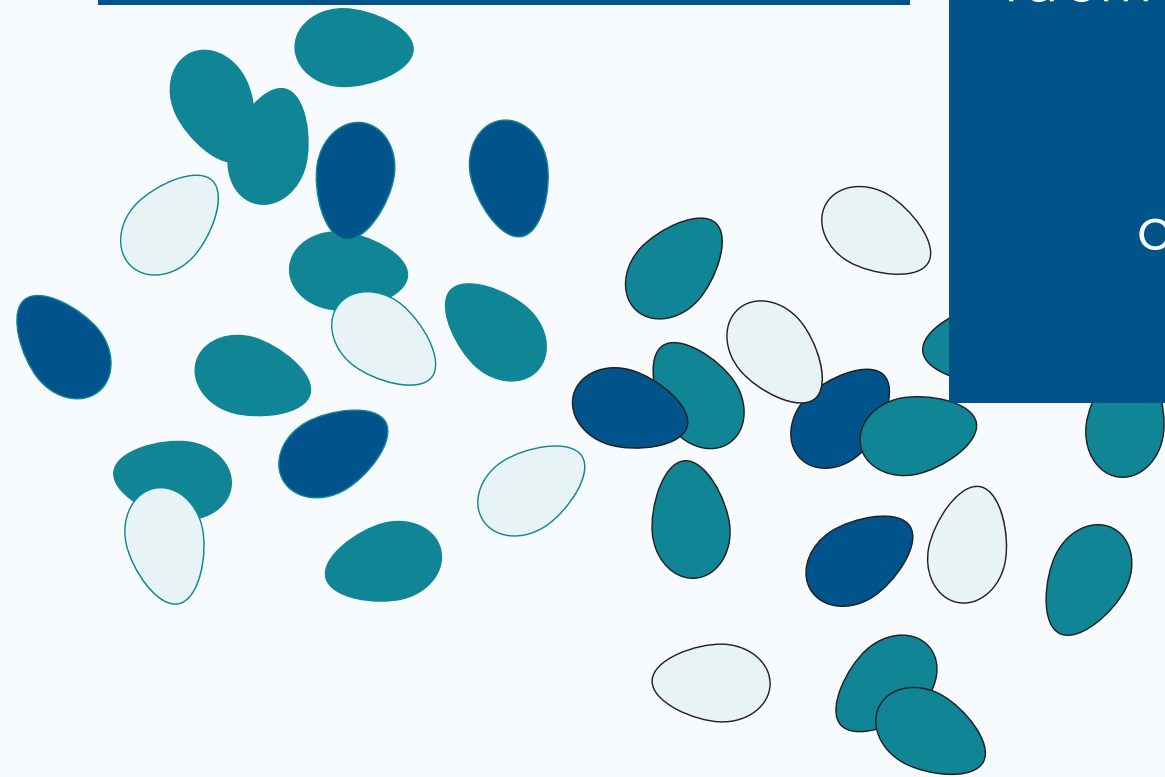
# WHAT YOU'LL GAIN...

Accelerator Seed  
Grants to catalyze the  
growth of initiatives

Storytelling training  
& support as well as  
significant visibility  
for speaking,  
facilitation, and other  
leadership  
opportunities

Ongoing Global  
Alliance Support to  
implement their  
Action Plans that are  
designed for long-  
term sustainability,  
policy change, and  
environmental and  
climate resilience

A comprehensive  
Action Plan to  
accelerate the  
climate/environmental  
initiatives, including  
an impact framework  
and metrics,  
implementation  
strategy, timeline,  
and budget



# WHAT YOU'LL GAIN...

Skills in professional development, leadership, entrepreneurship, advocacy, communications, and technical solutions from facilitators, regional experts, and cohort peers

Access to WEA's Accelerator Alumni Network and Alliance infrastructure to forge relationships, tools, share resources, and follow best practices

Skill and knowledge exchange within Affinity Groups working in your sectors

Ongoing one-on-one expert and peer mentorship

# YOU ARE A FIT FOR THIS PROGRAM IF YOU WORK IN..

## **Regenerative Agriculture**

Farmers, seed protectors, and food advocates practicing climate-adaptive agriculture, protecting soil regeneration, developing value-added businesses, and growing medicinal & native plants



## **Food Justice**

Food distribution innovators, community access providers, and those promoting policy for agricultural worker rights and health, and leaders close the gap in regenerative food production and access.



## **Autonomous Health & Reproductive Justice**

Culturally responsive land-based caretakers creating holistic, gender-specific solutions like doulas, herbalists, and those bridging the gap of adequate care for systematically neglected childbearing people.



## **Traditional Lifeways**

Cultural practitioners of Traditional Ecological Knowledge honoring Indigenous lineages, wisdom, and regenerative practices that care for communities, bodies, and land.







**“Every time we send a seed out, we send so much love with it. What is more hopeful than a seed that gets planted in the dark and has to fight its way out? But when it does, it brings such beauty and medicine and healing to us all.”**

**BETH ROACH**

**2019 U.S. ACCELERATOR LEADER**

**2019-2022 WISDOM KEEPER**



# **CURRICULUM OVERVIEW**

Lorem ipsum dolor sit amet, consectetur adipiscing elit, sed do eiusmod tempor incididunt ut labore.



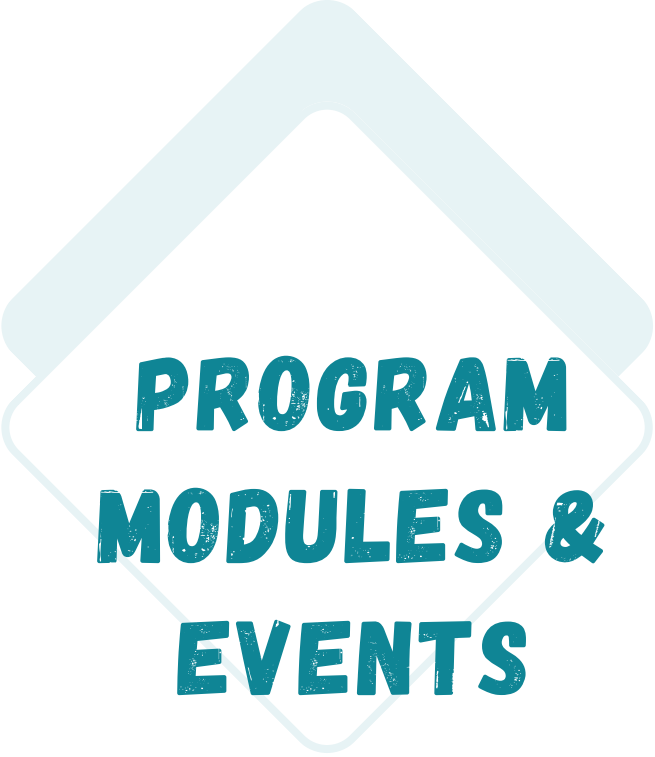
**WEA'S  
ACCELERATOR  
MODEL**



**HOLISTIC  
LEADERSHIP**



**DESIGNING FOR  
ACTION PROCESS**



**PROGRAM  
MODULES &  
EVENTS**

# HOLISTIC LEADERSHIP & TEACHING PHILOSOPHY

## WEAVING

### Relationship & Network Building

Strengthen and build relationships to deepen the impact of your work.

## WEALTH

### Designing For Action

Create the strategy, fundraising, and action plan you need to grow & scale your initiative.



## WISDOM

### Research & Advocacy

Develop an understanding of the broader context of your work. Design advocacy, policy, & campaign strategies for your initiatives.

## WELLNESS

### Personal & Community Resilience

Garner holistic wellness & leadership practices that will serve you and your communities.



# PROGRAM CALENDAR

2023 Dates	Activity	Time
August 15	Community Meetup Option 1	3:00 - 3:45 PM PT
August 17	Community Meetup Option 2	10:00-10:45 AM PT
August 23	Opening Circle	3:00 - 5:00 PM PT
August 30	Module 1: Seeding Community	3:00 - 5:00 PM PT
September 6	Module 2: Grounding in Purpose	3:00 - 5:00 PM PT
September 13	Module 3: Radical Strategy	3:00 - 5:00 PM PT
September 20	Module 4: Storytelling For Communities & Scaling Impact	3:00 - 5:00 PM PT
September 25-29	Virtual Collaboratory Prep (Week Off)	N/A



# PROGRAM CALENDAR

2023 Dates	Activity	Time
October 5	Virtual Collaboratory Day 1	TBD (BTW 8:00 - 5:00 PT)
October 6	Virtual Collaboratory Day 2	TBD (BTW 8:00 - 5:00 PT)
October 18	Module 5: Resource Mobilization	3:00 - 5:00 PM PT
October 24-26	Ripple Week	TBD (Will Be 3 Optional Events)
November 8	Workbook Circle	3:00 - 5:00 PM PT
November 15	Reflection Circle: Celebrating Solutions	3:00 - 5:00 PM PT
November 13 -17	Workbook Mentorship Week	Office Hours TBA
November 28	Community Event Series P1	10:00 - 11:00 AM PT 3:00 - 5:00 PM PT
November 29	Community Event Series P2	10:00 - 11:00 AM PT 3:00 - 5:00 PM PT







# COMMUNITY MEETUPS

Leaders get the most out of the Accelerator when their community is well-informed about the program and enrolled in their success. We will have two meetups to accommodate different schedules and encourage participants to invite people in their community who will be part of their support network as they work through the Accelerator Program.

## DATES

August 15	Community Meetup Option 1	3:00 - 3:45 PM PT
August 17	Community Meetup Option 2	10:00-10:45 AM PT



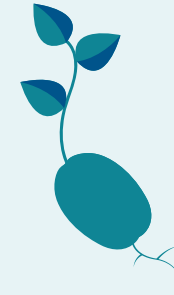
# PROGRAM MODULES



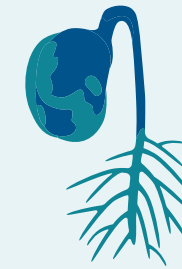
OPENING  
MODULE



MODULE 1



MODULE 2



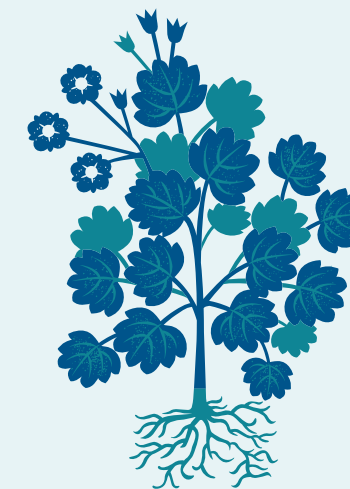
MODULE 3



MODULE 4



MODULE 5



REFLECTION  
CIRCLE

# PROGRAM MODULES



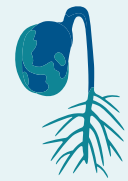
OPENING  
MODULE



MODULE 1



MODULE 2



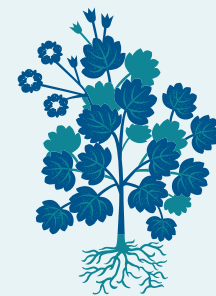
MODULE 3



MODULE 4



MODULE 5



REFLECTION  
CIRCLE

# MODULE DETAILS

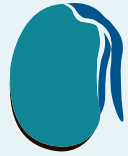


## OPENING MODULE

### Seeding Community

Meet the Program Team, Wisdom Keepers, Engage in the Seeding Community Ceremony, Establish Communication Guidelines, learn about the Seed Grant Process, and Program Outcomes.

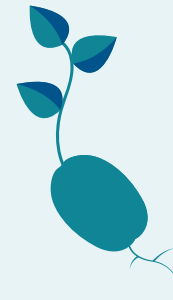
# MODULE DETAILS



## MODULE 1

Grounding in Purpose

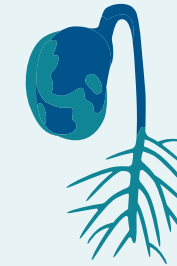
Defining our Problem Statements, Building Collective Purpose, and Undoing Environmental Violence & Systemic oppression in Food & Health.



## MODULE 2

Ecological Learning

Traditional Ecological Knowledge, Ecological Design and Environmental Impact on soils, trees, and the carbon cycle.



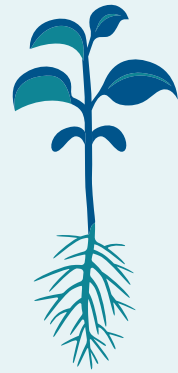
## MODULE 3

Radical Strategy

Designing With Boldness & Vision. Understanding Internalized Systems of Oppression & Casting Liberatory Futures.



# MODULE DETAILS



## MODULE 4

Storytelling & Impact

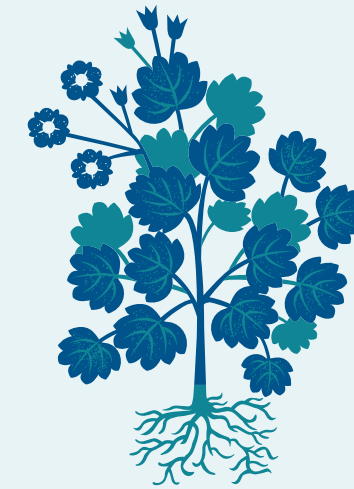
Measuring of Our Goals & Impact, along with Storytelling & Media Strategy.



## MODULE 5

Resource Mobilization

Harvesting Assets, Resources & Defining our Collective Resource Mobilization Power, while Healing Money Trauma



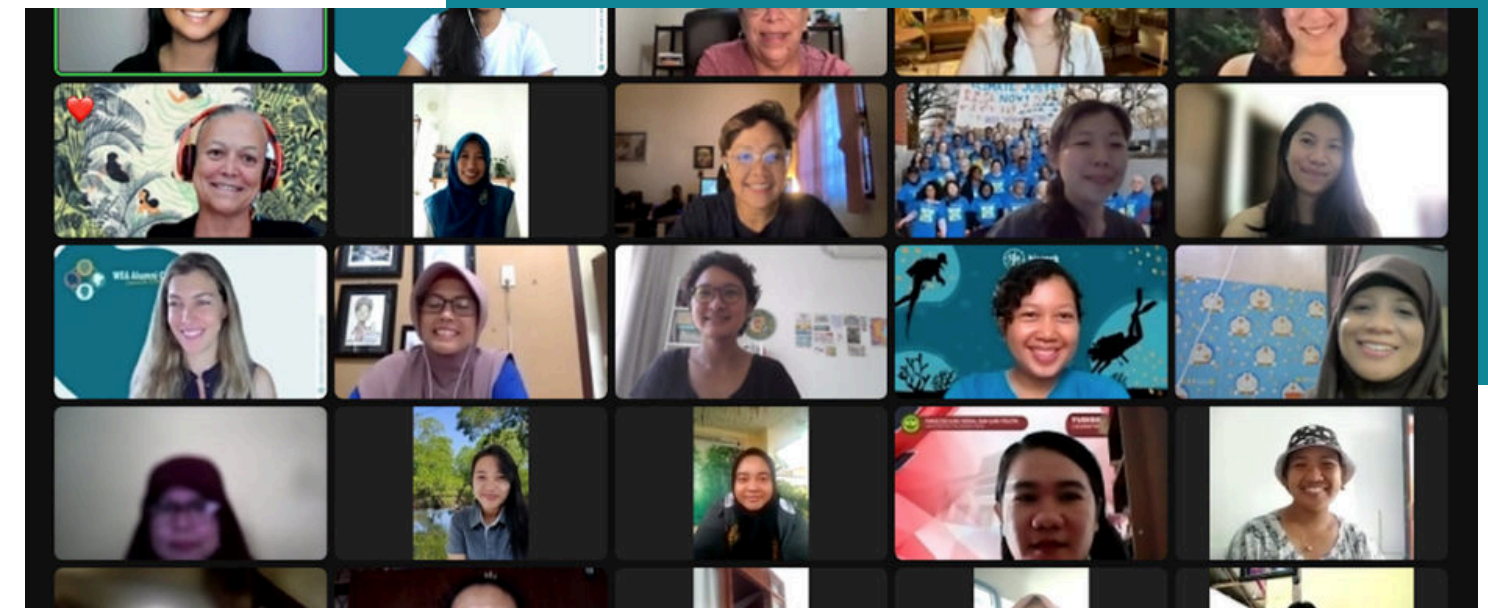
## REFLECTION

Celebrating Solutions

Moving Towards Growth & Harvest In Our Work, Celebrating our Community & Next Steps.

## WORKBOOK CIRCLE

- Apart of the program's curriculum is completing your action plan workbook. This will be a session to cowork, ask questions, and support each other in this process as you form the foundation of your projects!



## VIRTUAL COLLABORATORY

- This two day virtual conference will be where the cohort can share knowledge with one another.
- This will be all day on Wednesday and Thursday. Our hope is that organizations consider this to be development for leaders and allow them to be paid non working days.



## COMMUNITY EVENT SERIES

- These spaces will split you into groups and allows you to share your work and your project with WEA's community and the cohorts community. There will be 3-4 public events and you will be apart of 1 but, we invite you to support each others events!
- You'll learn more about specifics half way though the program.





# RIPPLE WEEK

Ripple Week is a time dedicated to skill building and knowledge sharing where we invite speakers from the WEA's network who have expertise in areas that the cohort is looking to develop, nurture, and grow.

## DATES

October 15-20	Ripple Week	TBD
---------------	-------------	-----





# SOME EXAMPLES FROM LAST YEAR'S RIPPLE WEEK



*The Rhythm of Movement*  
*Making: Art, Music, & Activism*



*Rematriating the Earth*  
*A Indigenous Visionary Chat*



*Land & Food Based Liberation*  
*at Soul Fire Farm*



*Tending our Waters:*  
*Healing with Herbal Medicine*







# ONLINE TECHNOLOGY

During the course of the virtual program, Accelerator Leaders engage with one another through various applications, which require access to technology (computer/tablet) and Wi-Fi.

Some of the tools we use will include:

- Online Teaching Platform
- Google Groups
- Whatsapp
- Zoom

If you require assistance with any of these applications, please contact us at [usaccelerator@womensearthalliance.org](mailto:usaccelerator@womensearthalliance.org).



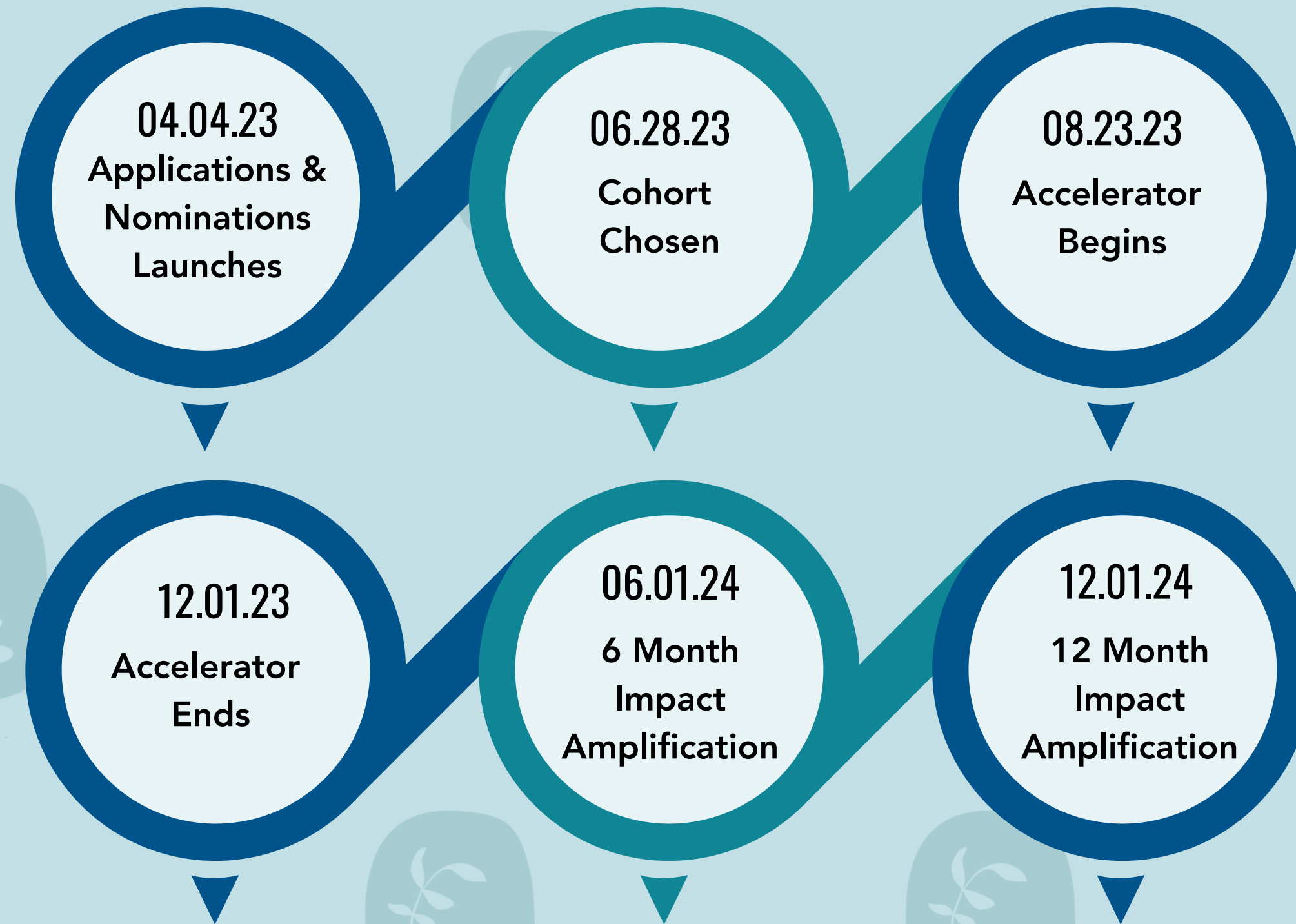


**“The Earth is living, not a thing to be extracted from the earth is a relative...we do what we can to try to remember that...by actually singing and dancing and asking permission and having ceremony and honoring the land that gives us so much not just for the food but for the capacity to compost our trauma as a whole.”**

**LEAH PENNIMAN  
2022 U.S. ACCELERATOR WISDOM KEEPER**



# APPLICATION, NOMINATION, & IMPACT DATES



# APPLICATION PROCESS NEXT STEPS

## STEP 1

Complete an Application Form

## STEP 2

Nomination & Applications Close on June 1st

## STEP 3

Our Accelerator Review Committee will reach out to you by June 14th. The next round will include a 20-30 minute interview. Applications will be reviewed under the following criteria:

- How close your sector and work aligns with the goal of the cohort
- Demonstrated desire to learn, grow, and work in a diverse and committed community of women environmental/climate justice leaders
- Potential of your well-developed project to create measurable environmental/climate impact
- Strength of your justice lens

## STEP 4

You will receive notification of your participation status by June 28th





# OUR DESIGN PROCESS + JUSTICE LENS

We are a global alliance of leaders who are committed to working at the intersection of gender, racial and environmental justice, because we know one can't happen without the other. This Accelerator program works to transform systems of injustice including but not limited to racism, sexism, classism, and ageism. We ground our curriculum and activities in Accountability Principles. The collaborative Design Team builds light-framed, non-extractive and flexible curricula, drawing upon their lived experiences, and their deep commitment to creating models that expose systemic inequities and offer pathways toward collective liberation and a Just Transition.







# *Regenerative Agriculture & Health*

## **ACCELERATOR**